

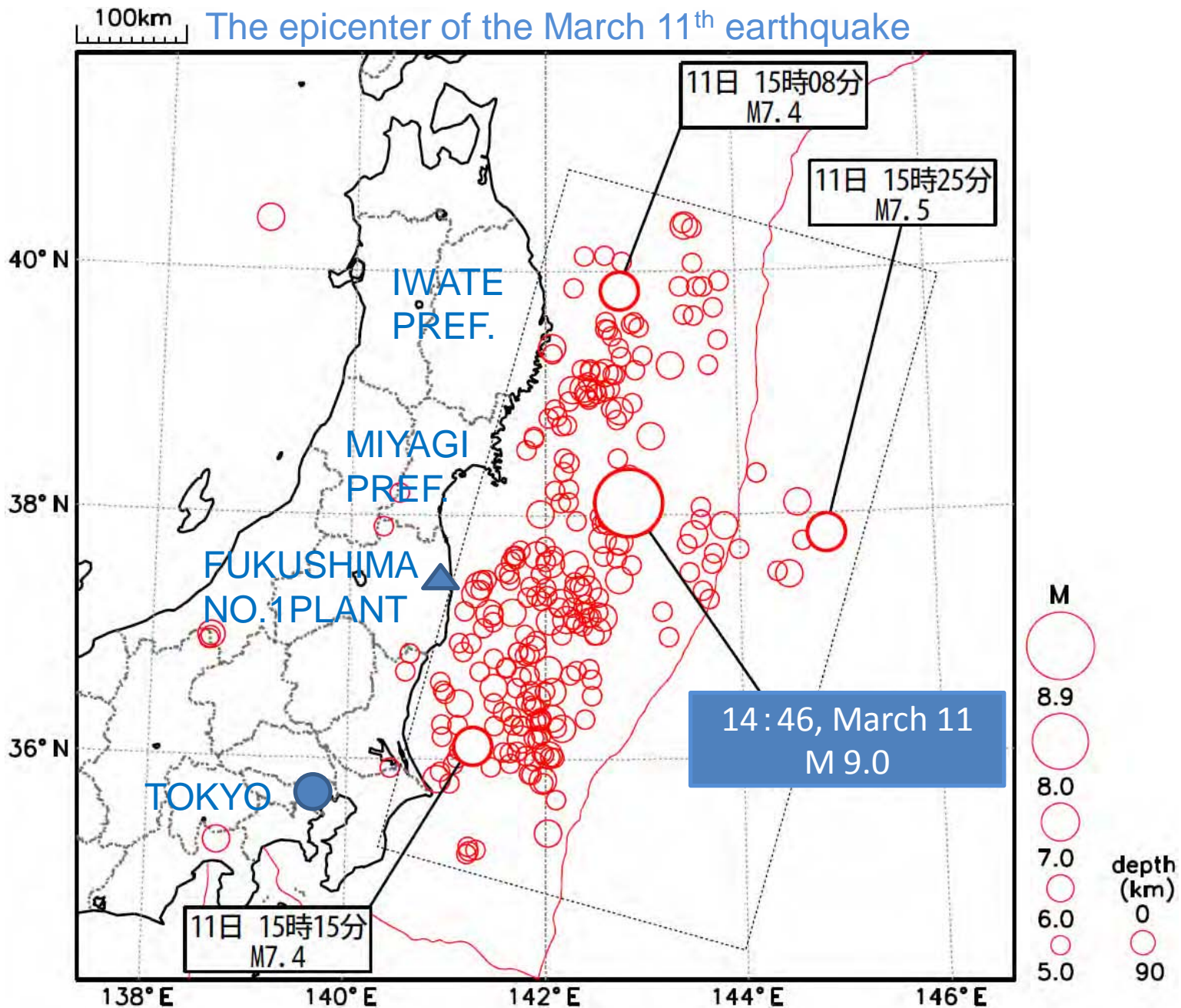
CDNL-AO in Seoul May 17th, 2011

The Great East Japan Earthquake on March 11



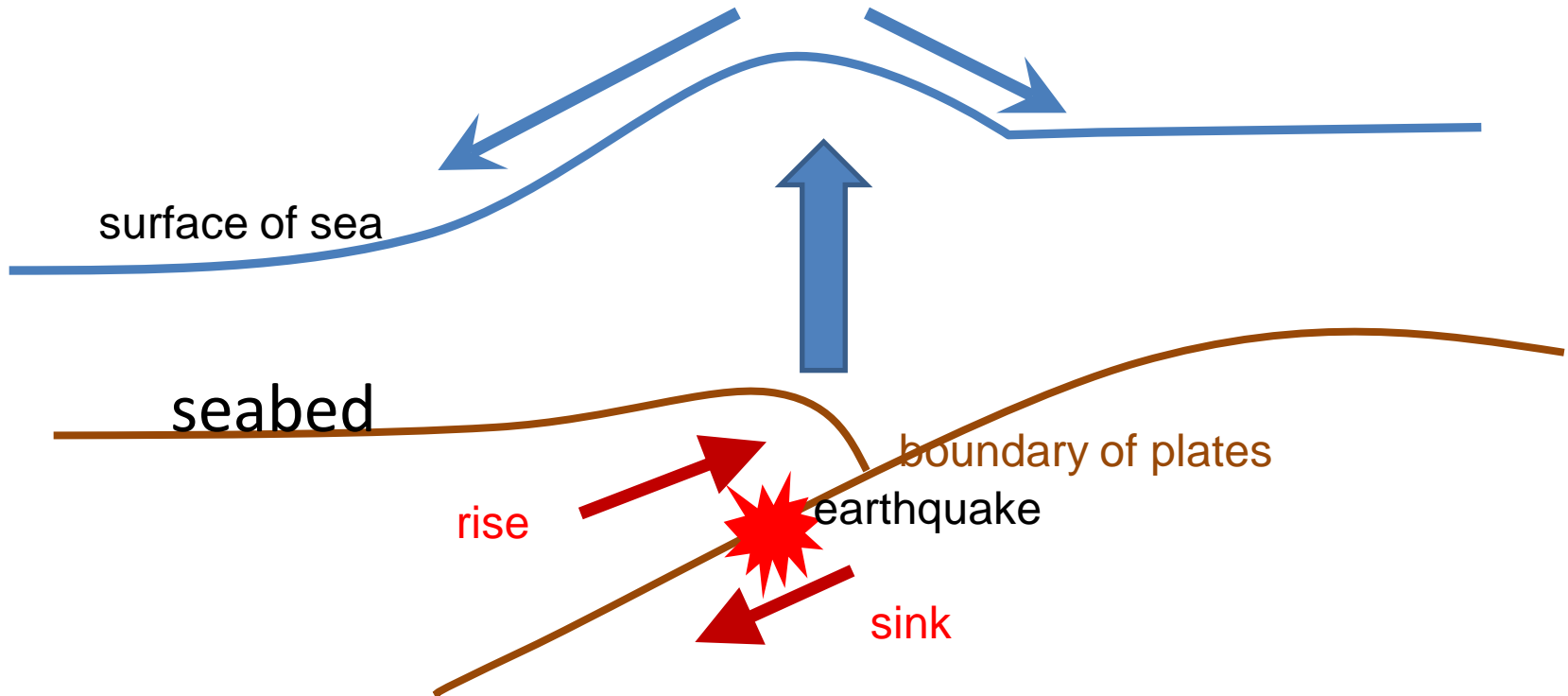
The National Diet Library of Japan





Source: Japan Meteorological Agency, Sendai district Meteorological Observatory

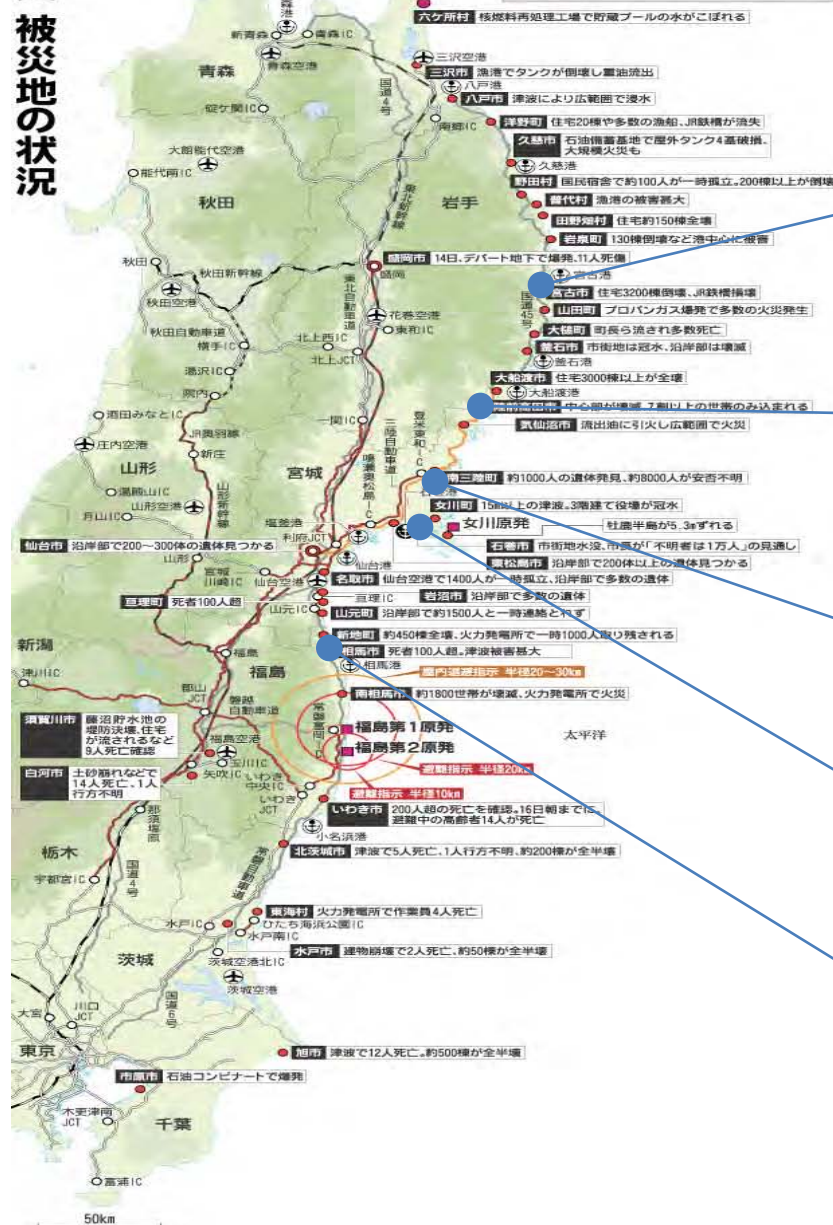
What is a tsunami?



Photos : areas devastated by the tsunami

東日本大震災 被災地の状況

- 利用できる空港、港
 - ※仙台空港は災害対策にのみ利用可能
- 利用できない港
- 通行できない区間のある国道
- 一般車両通行止め区間
 - ※常磐道の常磐富岡IC-いわき中央IC間以外は大型車両などは通行可
- 新幹線は東京-那須塩原、盛岡-新青森、盛岡-秋田間で運転
- 運休



Miyako city

Rikuzen-takada city

Minami-sanriku town

Ishinomaki city

Souma city

Source : Mainichi shinbun(newspaper)

TARO district, Miyako city, Iwate Pref.

The tsunami went beyond its gigantic seawalls at a height of 10 meters



Before (October, 1977)



After (March 13, 2011)



Source: Geospatial information authority of Japan

Rikuzen-takata city, Iwate Pref.
Center of city was devastated, more than 70% of families swept away



Before (October, 1977)



After (March 13, 2011)



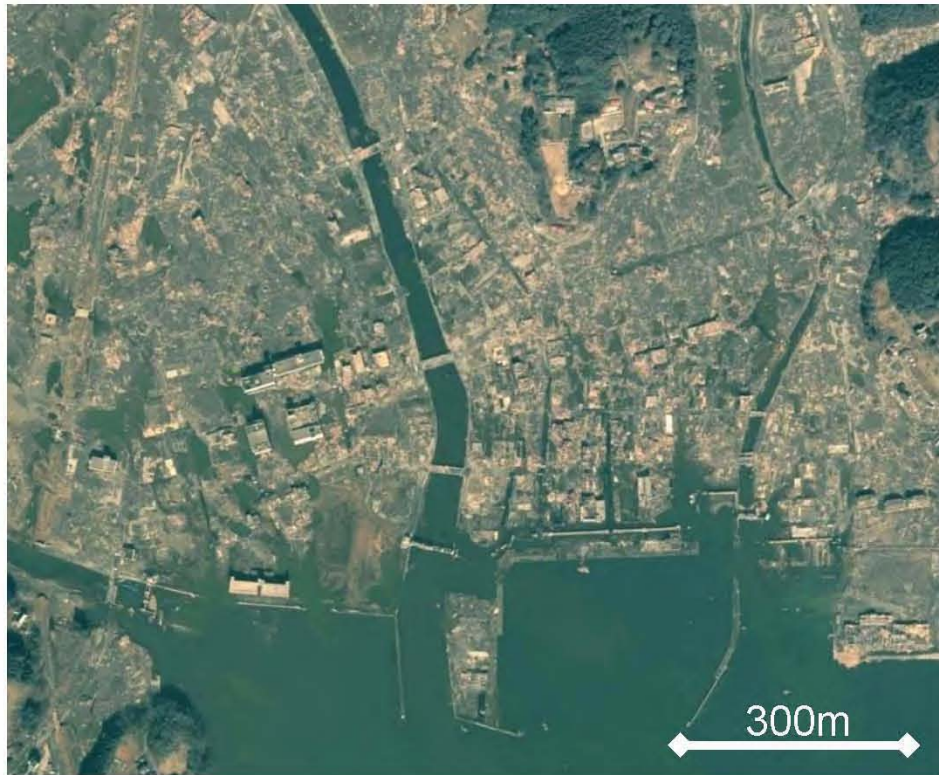
Source: Geospatial information authority of Japan

Minami-sanriku town , Miyagi Pref.
9,000 residents (half the population) are
dead or remain unaccounted for.



Before (October, 1977)

After (March 13, 2011)



Source: Geospatial information authority of Japan

Ishinomaki city, Miyagi Pref.

More than 28,000 houses utterly destroyed, and more than 10,000 people are dead or missing

Before (September, 1975)



After (March 12, 2011)



Source: Geospatial information authority of Japan

Souma city, Fukushima Pref.

Thoroughly destroyed, and the number of missing people remains unknown .



Before (September, 1975)



After (March 12, 2011)



The restoration work at the National Diet Library



The National Diet Library of Japan

Books housed in the stacks of
the Tokyo Main building
Before March 11



8500

8.000

8.600

8.200

8800

8400

Y77

100

100

Y75

200

100

Y71

900

7600

7200

7400

Y72

600

1200

800

1100

6000

6200

6400

6600

6800

7000

7200

7400

7600

7800

8000

8200

8400

8600

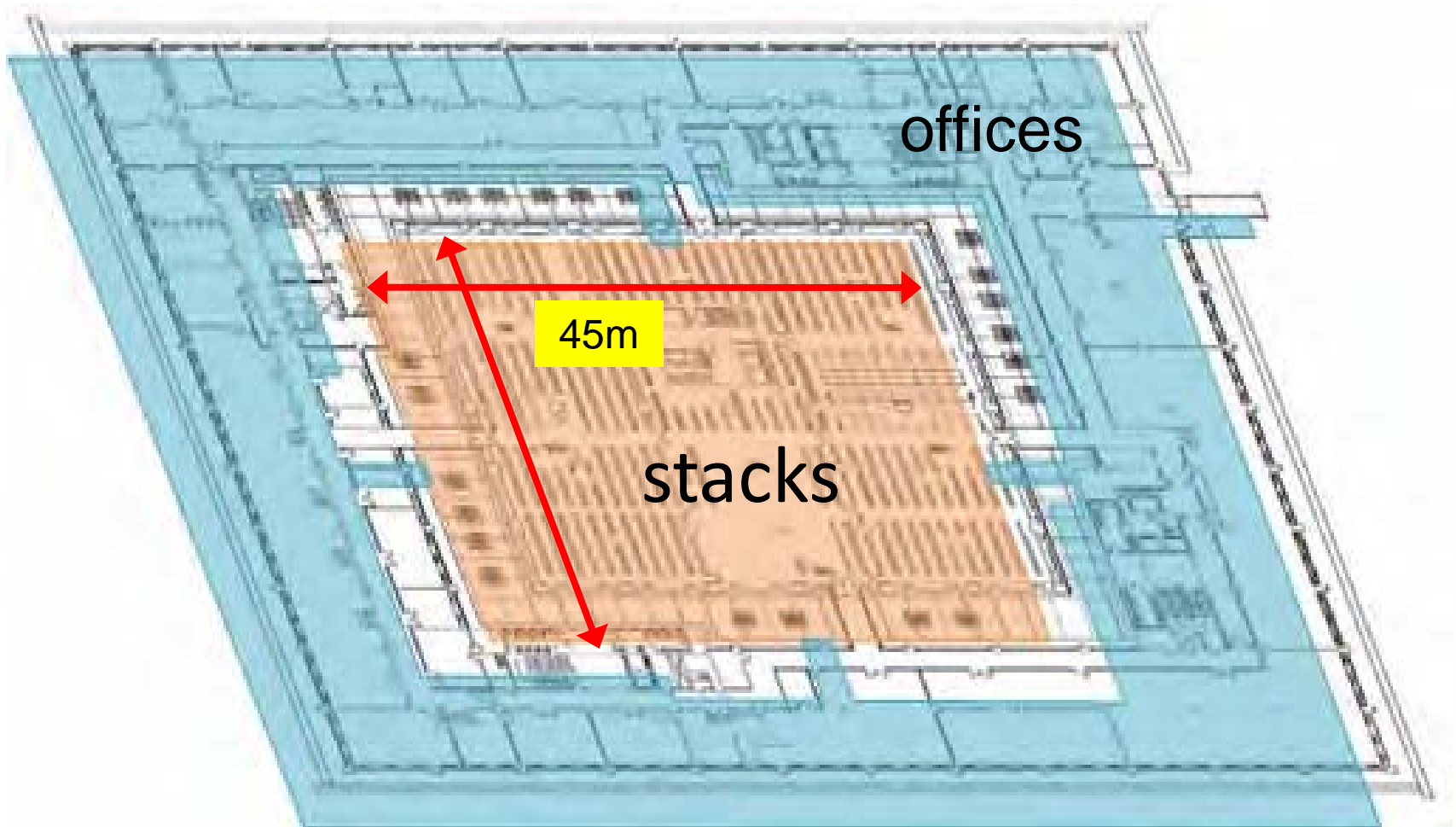
8800

9000

Just after the
earthquake occurred



Main building and stacks

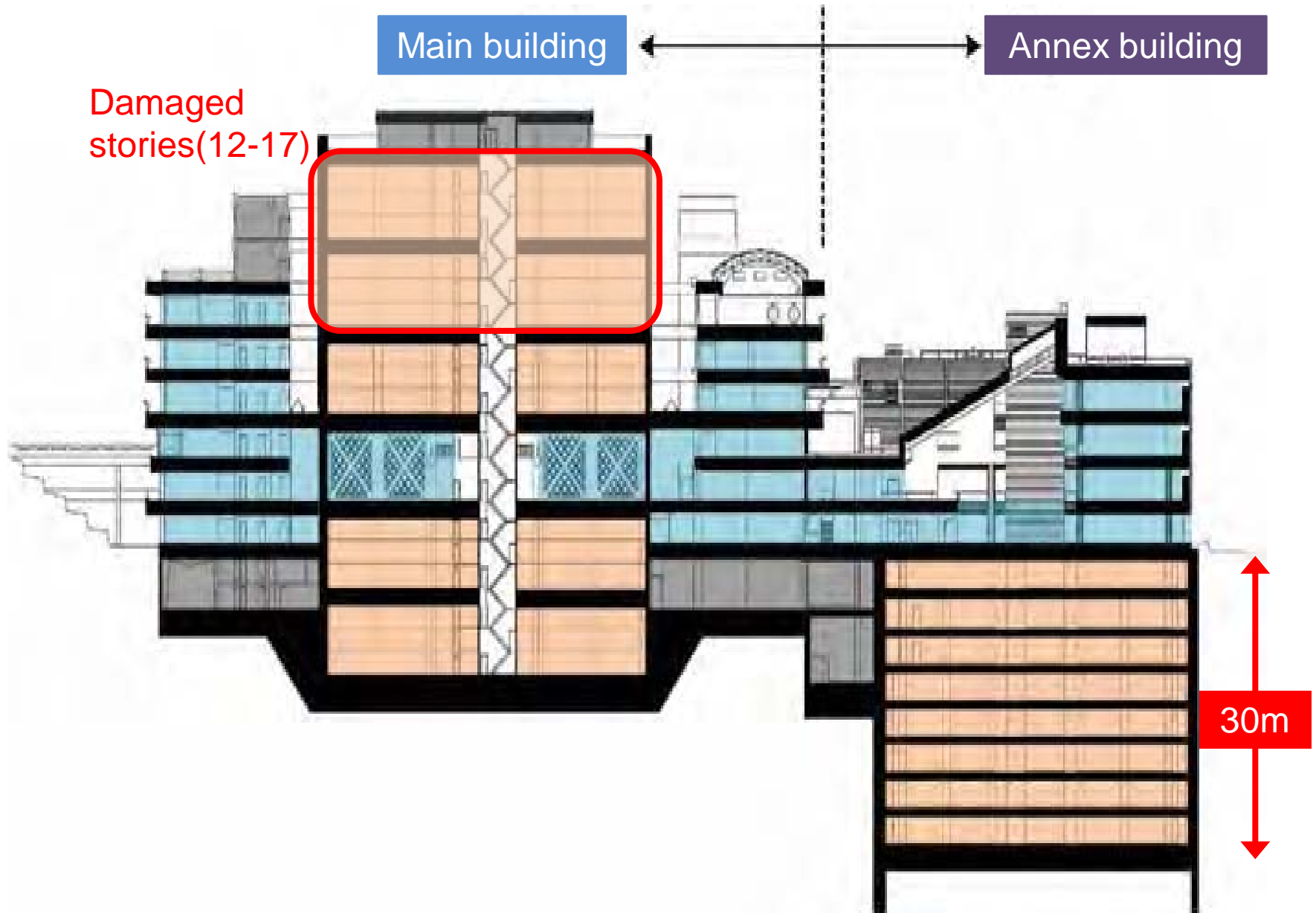


Side view of the Tokyo Buildings

Main building

Annex building

Damaged stories (12-17)



Restoration work began on
March 22, 2011



Y65

8200

8800

200

雷見霞天風呂



Y65

8200

8800

JAPANESE TELECOMMUNICATIONS

トウイブする 最新7編
JALIC 11000000

毎日露天風呂



Y65

8200

8800

雪見露天風呂



V72
100

100

Y75

100

Y71

900

8.200

8800





100

Y77

100

100

Y75

100

100

200

Y71

200

8.000

8.600

7.600

8.200

8.800

8.400

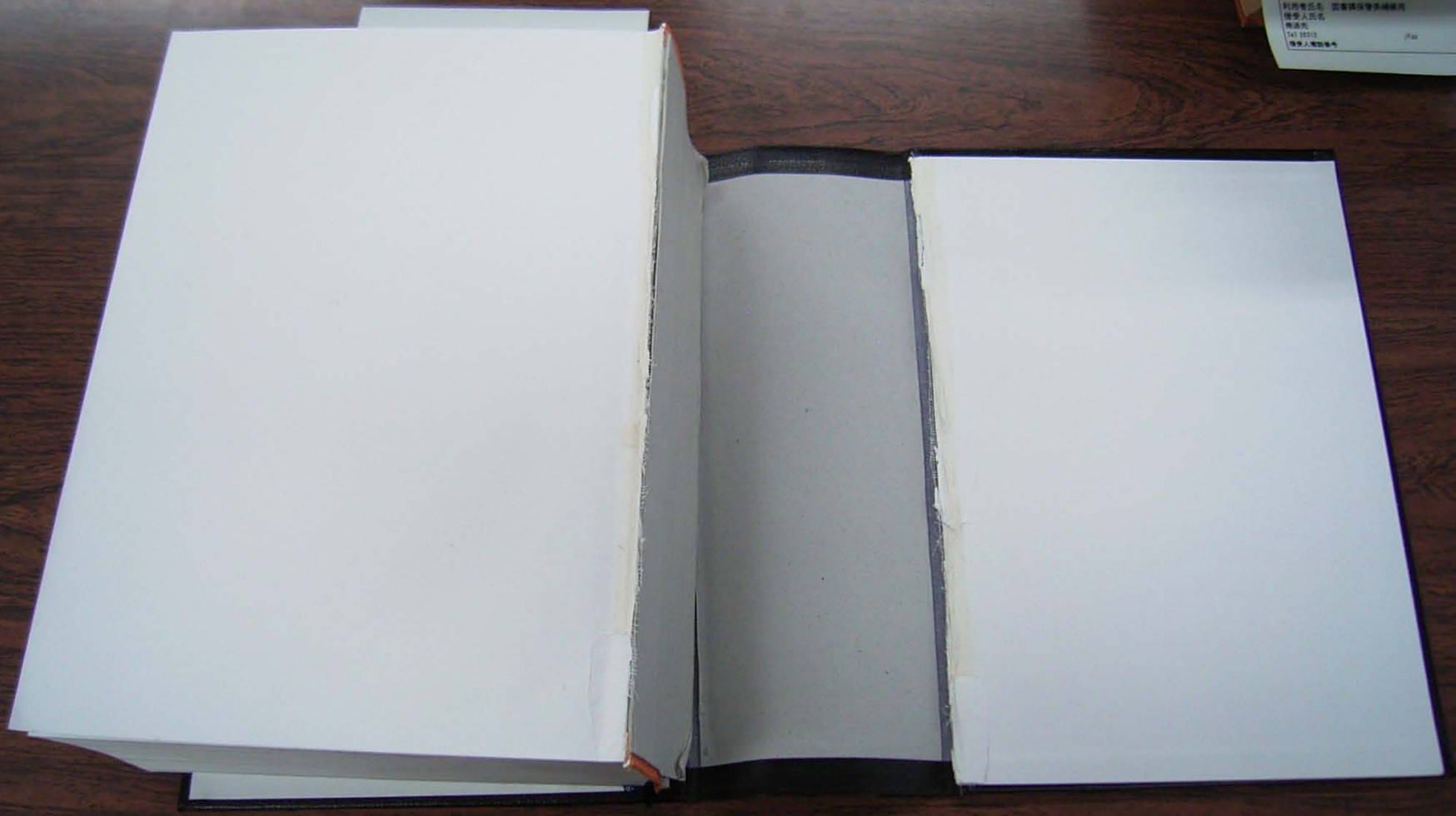


Restoration work
completed

mid April, 2011

Photo:
Damaged Books





2011/05

8000-000 / 000-000
劉阿香 姓名 圖書課保管區域專用
借閱人姓名
陳漢光
147 0012
借閱人編號

2011/05

8000-000 / 000-000
劉阿香 姓名 圖書課保管區域專用
借閱人姓名
陳漢光
147 0012
借閱人編號

圖書課

The END

Thank you for your attention.