

National Diet Library



International Library of Children's Literature



Tokyo Main Library



Kansai-kan of the National Diet Library

真理がわれらに

The National Diet Library (NDL) is the parliamentary library of the National Diet of Japan and was founded in 1948 by the National Diet Library Law, in accordance with Article 130 of the Diet Law, which states in part that “The National Diet Library shall be established in the Diet by a separate law, in order to assist Diet Members in their study and research.”

Mission and Role The mission and role of the NDL is stipulated by the National Diet Library Law.

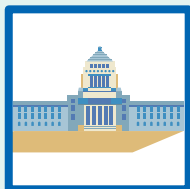
Mission

“The NDL is hereby established as a result of the firm conviction that truth makes us free and with the object of contributing to international peace and the democratization of Japan as promised in our Constitution.” (From the Preamble of the National Diet Library Law)

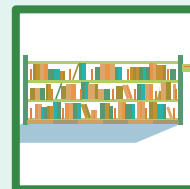
Role

“The National Diet Library shall collect books and other library materials for the purpose of assisting the members of the National Diet in the performance of their duties and also for the purposes of providing certain library services as hereinafter specified for the executive and judicial agencies of the national government and for the people of Japan.” (From Article 2 of the National Diet Library Law)

Basic Roles The NDL is tasked with the following four basic roles.



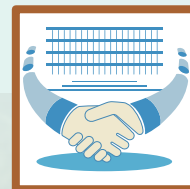
Supporting the National Diet



Acquiring, cataloging, and preserving materials and information



Providing access to information resources



Cooperation with affiliated institutions

History

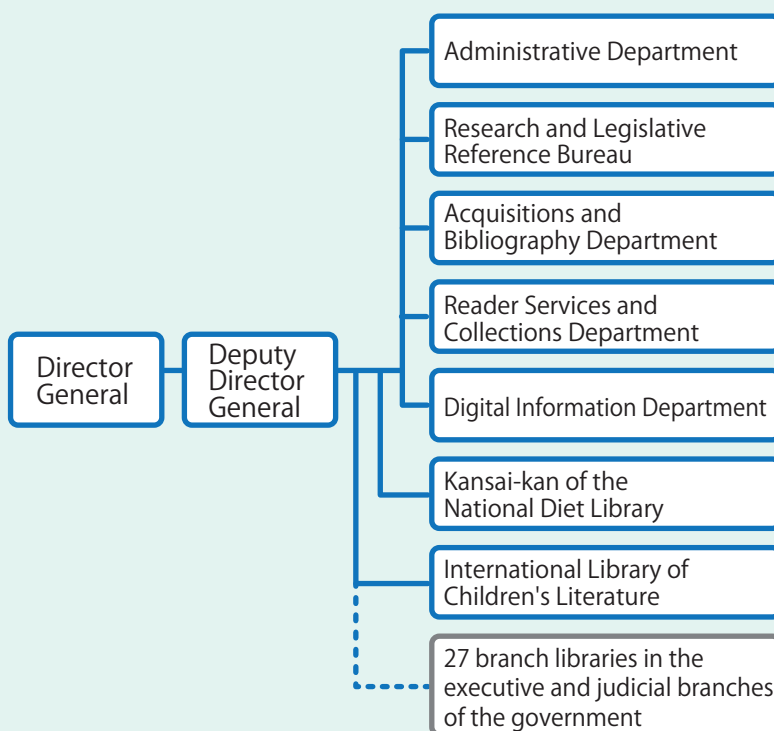
The NDL has two origins: one is the libraries of the House of Peers and the House of Representatives in the former Imperial Diet; and the other is the Imperial Library under the Ministry of Education. Most of these collections were transferred to the present NDL.

The National Diet Library Law was enacted in February 1948, and the NDL opened on June 5 of the same year.

1948	NDL opened to the public using the former Akasaka Detached Palace (now the State Guest House) as a temporary facility
1949	Former Imperial Library became the Ueno Branch Library of the National Diet Library
1961	First phase of the present Nagata-cho facility completed
1968	Main building of the Nagata-cho facility completed
1986	Annex of the Nagata-cho facility completed
2000	International Library of Children's Literature partially opened in the renovated former branch Ueno Library
2002	International Library of Children's Literature fully opened Kansai-kan of the National Diet Library opened
2015	Service started in the Arch Building of the International Library of Children's Literature
2020	Storage Annex of the Kansai-kan of the National Diet Library completed

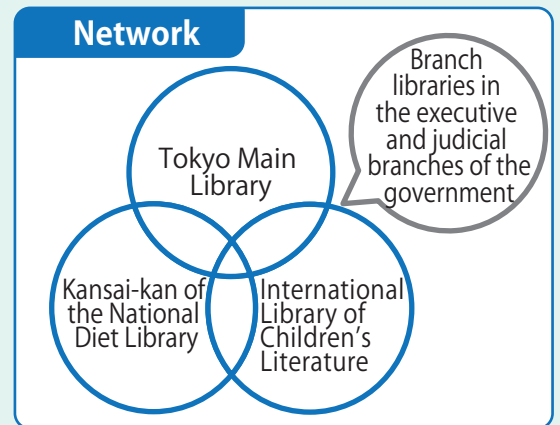
Organization

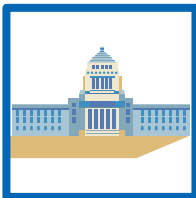
The NDL is a part of the legislative branch, the National Diet of Japan.



The NDL comprises three main facilities: the Tokyo Main Library, the Kansai-kan of the National Diet Library, and the International Library of the Children's Literature, which each play important roles in providing comprehensive library services as part of a single national organization.

The NDL collaborates with 27 branch libraries operated by agencies in the executive and judicial branches of the Japanese government, which form a network and collaborate closely in providing general library services.





Supporting the National Diet

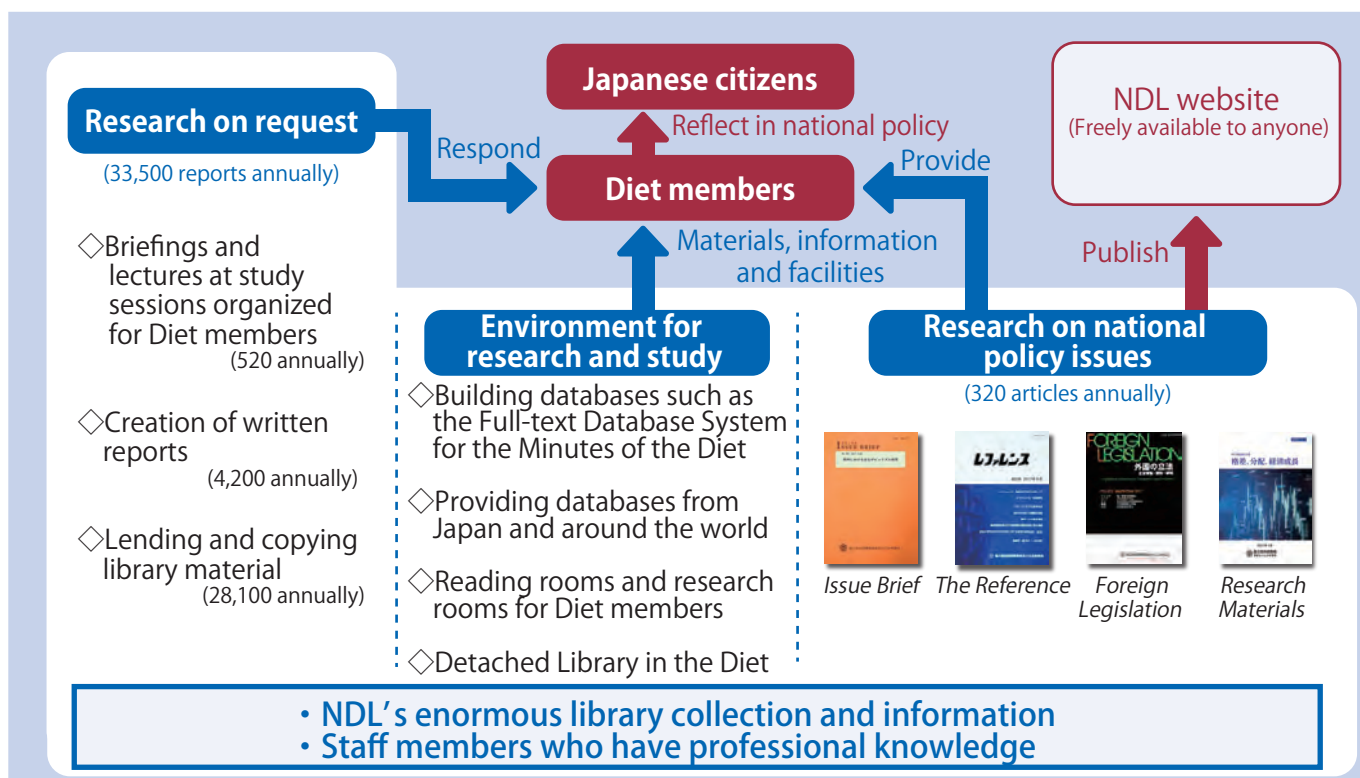
1 The NDL supports the Diet and assists the activities of Diet members, using its professional expertise in research and accumulated information resources.

Research on request

The NDL carries out legislative research on a wide variety of national issues related to politics, economy, society, or science and technology in response to requests from Diet members.

Research on national policy issues

The NDL carries out research and publishes research papers in advance on subject matter it anticipates will prove germane to national politics.



2 The NDL database of the minutes of the Diet and laws in the Japanese language keep the general public informed of Diet activities via the internet.

The database provides information on deliberations at each stage of the legislative process including enactment, revision or abolition of bills submitted to the Diet and the Imperial Diet. Users can also refer to the text of minutes, laws and bills from links.

Full-text Database System for the Minutes of the Diet
<https://kokkai.ndl.go.jp/>



(Built in cooperation with the House of Representatives and the House of Councillors.)

Database System for the Minutes of the Imperial Diet
<https://teikokugikai-i.ndl.go.jp/>



Index Database of Japanese Laws, Regulations and Bills
<https://hourei.ndl.go.jp/>





Acquiring, cataloging, and preserving materials and information

1 Material Acquisition

Domestic Publications—Legal Deposit System

The National Diet Library Law requires that all publications published in Japan, including microfilms, CDs, DVDs, maps, and more, be deposited with the NDL. Through this Legal Deposit System, the NDL collects many domestic publications.



Legal Deposit System



Foreign Publications

The NDL selects and collects materials on Japan, as well as materials which are useful to support Diet activities and for conducting research and studies, by purchase, international exchange, and donation.

Websites

The NDL archives domestic websites.

- **Web Archiving Project (WARP) of the National Diet Library**
https://warp.da.ndl.go.jp/?_lang=en

Archiving Internet Information



Online Publications

The NDL also collects e-books and e-magazines which are private online publications.

2 Making and Providing Bibliographic Data

The NDL makes bibliographic data of collected materials and provides it through the National Diet Library Search.

- **National Diet Library Search**
<https://ndlsearch.ndl.go.jp/en/>

The NDL provides services that enable integrated searches of the bibliographic data and digital archives of public libraries, archives, museums, research institutes, and the NDL. Users can access standard bibliographic data for domestic publications collected by the NDL via an Application Programming Interface (API).

Making and Providing Bibliographic Data



3 Preservation and Conservation

To preserve and ensure future access to the library materials the NDL has collected, which are the shared cultural heritage of the nation, the NDL has initiatives to digitize materials, repair damaged materials, and develop a proper environment for preservation.



Preservation and Conservation





Providing access to information resources

1 Services Available without Visiting the Library

The NDL provides online services available to anyone from anywhere at any time.

Services Available via the Internet

• **National Diet Library Search** <https://ndlsearch.ndl.go.jp/en/> (see p.5)
Remote copying services are available for registered users.



• **NDL Digital Collections** <https://dl.ndl.go.jp/?lang=en>

NDL Digital Collections enables users to search and view a wide variety of digital materials. Also, official registered users of the NDL who reside in Japan and who have agreed to the latest version of the terms of service are able to access out-of-print and other hard-to-find materials.



• **Research Navi** <https://rnavi.ndl.go.jp/en/index.html>

Research Navi provides an introduction to key research techniques, reference materials, useful databases and websites, indexed by subject matter and resource category.

Research Navi

Services Available from Local Libraries

The NDL delivers materials to public and university libraries. You can also request copying and reference services through these libraries. The NDL provides a Digitized Contents Transmission Service, through which digitized versions of NDL holdings that are out-of-print or otherwise difficult to obtain are available at libraries and institutes that are partners of the NDL.

2 Services Available by Visiting the Library

The NDL provides services including access to materials held by the NDL, copy services, and reference services.

3 Services for the Staff of Agencies in the Executive and Judicial Branches of Government

We lend library materials and accept requests for photocopying and reference services via National Diet Library branch libraries in many agencies of the executive and judicial branches of government.

4 Services for Persons with Print Disabilities

• **Mina Search (NDL Materials Search for Persons with Disabilities)**
<https://mina.ndl.go.jp/en/>

Mina Search has a single interface to search for reading materials in a variety of accessible formats. Registered users of this service can download materials in Digital Accessible Information System (DAISY), text, or other accessible formats made by public libraries.

In addition, the NDL produces talking books of academic literature for users with print disabilities and lends them through libraries across Japan.



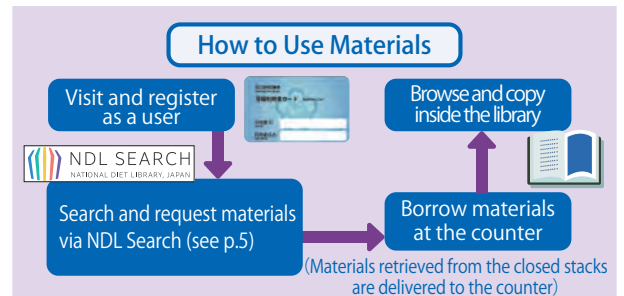
For Persons with Print Disabilities



5 Promoting Children's Reading Activities

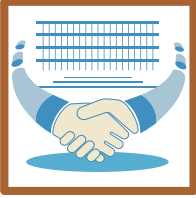
The International Library of Children's Literature provides library services for children's books from both Japan and around the world. We feel that every child should have the opportunity to become familiar with books and libraries, and we support programs that promote children's reading activities through exhibitions and other events related to children's literature.

International Library of Children's Literature



Services for Executive and Judicial Agencies





Cooperation with affiliated institutions

1 Support for and Cooperation with Libraries in Japan

We provide training and information to libraries in Japan in support of their activities and human resource development, sharing our expertise in library sciences to help improve the operations and services of libraries throughout Japan.

•Collaborative Reference Database <https://crd.ndl.go.jp/reference/>



The NDL's Collaborative Reference Database is a Japanese-language resource, through which libraries are able to share their responses to reference questions as well as to provide information for personal study.

For Librarians



2 International Cooperation

The NDL participates in the International Federation of Library Associations and Institutions (IFLA) and other international activities, through which we interact with other national libraries and their affiliated institutions in working to solve problems that are universal to all libraries, as well as promote cooperative and collaborative projects with organizations that share common goals.



International Cooperation



3 Comprehensive Access to Information Resources

We employ data linkage via the internet to provide our patrons with a variety of data-linkage platforms that access digitized materials or search guides for Japanese libraries, including integrated searchability for records on the Great East Japan Earthquake and other useful means for accessing cultural resources throughout Japan.



Japan Search



Great East Japan Earthquake Archive (HINAGIKU)



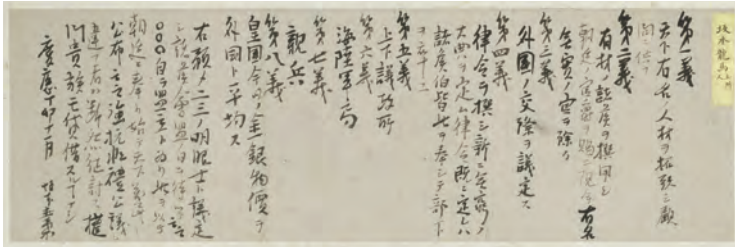


Wide variety of NDL collections

Digitized images of materials marked with * are available on the NDL website.

Modern Japanese political history documents

Collections of private papers in and after the latter half of the 19th century. They comprise a wide variety of materials, including letters, diaries, office materials, photographs and audio recordings, once owned by political leaders, i.e. Cabinet Ministers, Diet Members, senior civil and military officers, and others. Each collection bears its former owner's name.



Shin Seifu Koryo Hassaku, included in Boyucho*
November 1867
【Papers of ISHIDA Eikichi 1-5】

SAKAMOTO Ryoma's handwritten conception of the form of government, compiled after the Taisei Hokan (restoration of political power to the Emperor).

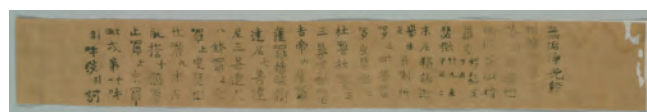
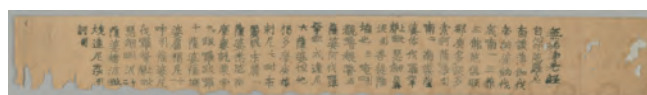
Rare books and old materials

Collections of rare books, semi-rare books, Japanese old books up to the Edo Period, Chinese old books up to the Qing Dynasty, etc.

Taketori monogatari*

3 volumes [copied in the early Edo period] 【本別 12-3】

Beautiful picture scrolls of Taketori monogatari, which was written in the early Heian period.



Hyakumanto Dharani*

770【WA3-1】

The oldest traceable publication in the world whose production date is clear. It was created at the behest of the Empress Shotoku (718-770) of the Nara period.

Materials related to Japan

Works about Japan and works by Japanese people published outside Japan, as well as foreign periodicals about Japan, which have been intensively collected since the time of the former Imperial Library.



Asian-language and Asia-related materials

Asian language materials and materials about Asia written in Japanese and European languages. It covers East Asia, Southeast Asia, South Asia, Central Asia, the Middle East, and North Africa.



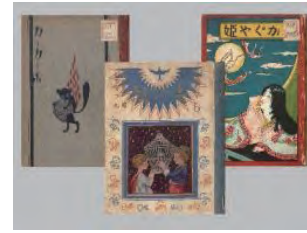
Maps

Domestic and foreign single-sheet maps published during and after the Meiji era (from 1868), and residential maps of Japan.



Children's literature

Japanese and foreign children's books and periodicals, and related materials.



Music and audio-visual materials

Audio-visual materials, musical scores, electronic publications (CD-ROMs, etc.) and scripts.

Audio recordings

(phonograph records, CDs, etc.)

Phonograph records, cassette tapes and CDs, primarily those released in Japan.



Science and technology materials

Technical reports, foreign doctoral dissertations, preprints of academic societies, proceedings in Western languages, standards, foreign patent materials, etc.



Parliamentary and legislative documents, and official publications

Parliamentary documents of Japan and other countries, official gazettes, official bulletins, statutes, law reports and publications of government offices as well as publications of international organizations (UN, EU, etc.)



Horei zensho*,
1872
1889 [CZ-4-1]

Statutes-at-large of Japan, compiled by arranging laws by month since October 1867. The volume for 1872 contains the declaration of the Dajokan stipulating the adoption of the solar calendar.

Newspapers

Newspaper collections of Japanese titles and major foreign titles. Japanese titles include national papers, regional papers, trade papers, and sports papers.



**Yokohama
mainichi shinbun***
1st issue, December 8,
1870 [WB43-78]

It is considered Japan's first Japanese-language daily newspaper. The publication date is based on the lunar calendar and falls on January 28, 1871 in the current calendar.



Digital Exhibitions



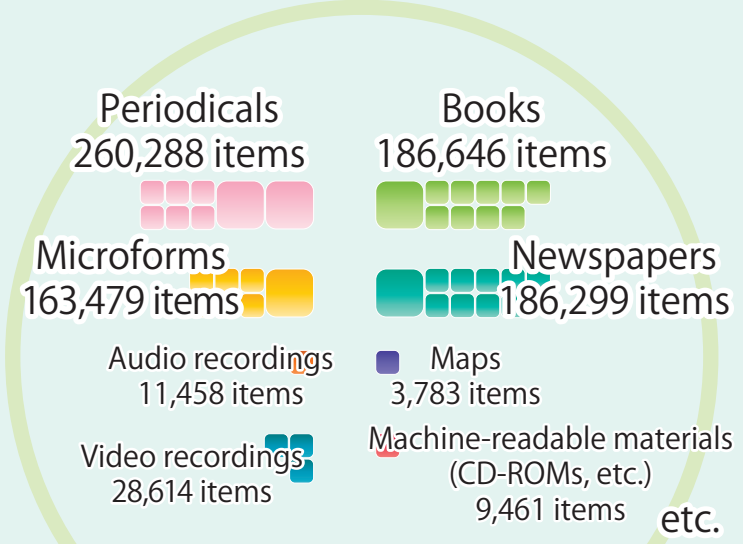
Each exhibition features the NDL's diverse collections with easy-to-understand explanations.

NDL in figures

Key statistics of FY 2022

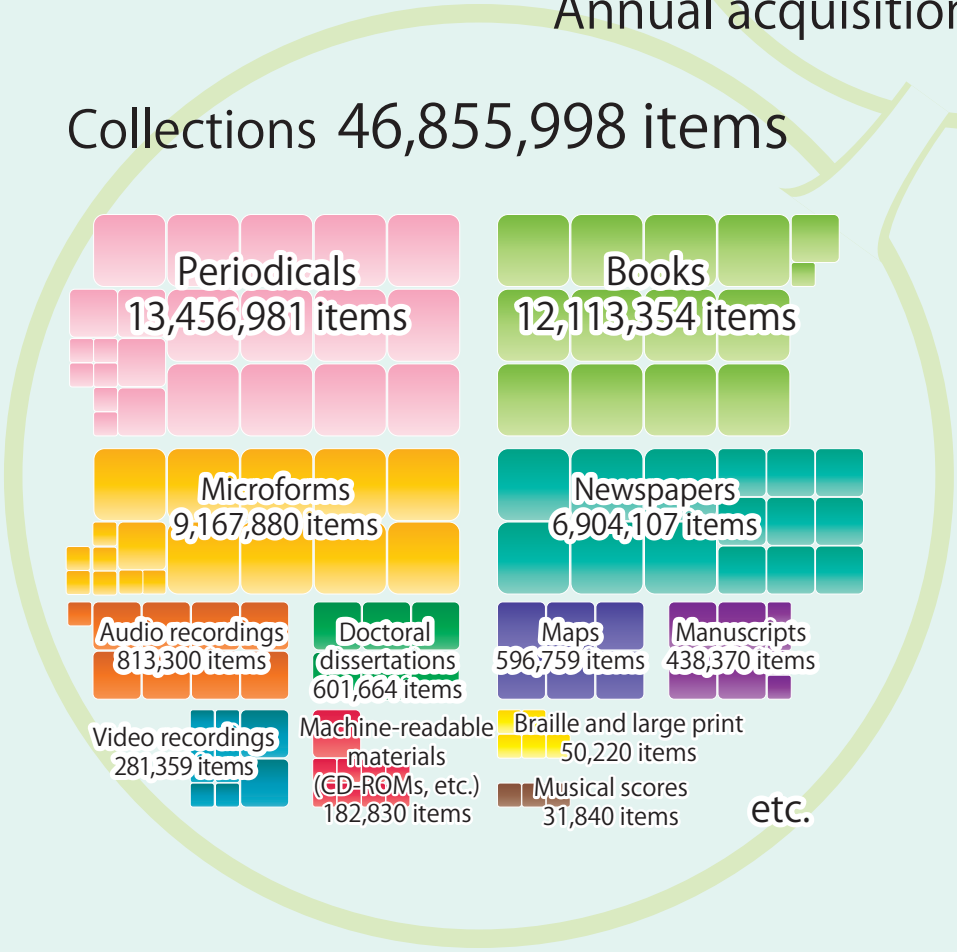


Explanatory note
 1 million items
 100,000 items
 10,000 items



Annual acquisition 871,292 items

Collections 46,855,998 items



Number of bibliographic data produced (per year)

535,762 items

Number of bibliographic data provided (total)

27,569,063 items

Services for the public		Digital library services	
Reference services	500,513 cases	Visitors to our website	37,941,442 cases
Reading services	1,652,421 items	Viewers of digitized materials on the NDL Digital Collections	66,871,857 cases
Photoduplication services	942,166 cases	Viewers of contents on the WARP	38,797,455 cases
Remote photoduplication services	277,981 cases		
On-site users		Digitized materials available on the NDL Digital Collections	
Total	509,023 people	Total	5,028,894 items
Tokyo Main Library	334,626 people (1,199 per day on average)	Number of materials available via the internet	1,838,041 items
Kansai-kan of the NDL	67,188 people (241 per day on average)	Available with Digitized Contents Transmission Service	1,851,430 items
International Library of Children's Literature	107,209 people (377 per day on average)	Available only at the NDL	1,339,423 items
		Materials digitized by the NDL (Approximate)	
Services for the Diet		Total	3,430,000 items
Research on request	33,465 cases	Number of materials available via the internet	
Research on national policy issues	319 cases		580,000 items
Services for the executive and judicial branches of the government		Available with Digitized Contents Transmission Service	
Research and reference	426 cases		1,840,000 items
Loan services	4,028 items	Available only at the NDL	1,010,000 items
Services for libraries		Online publications collected by the NDL (Approximate)	
Reference services	4,142 cases	Total	1,480,000 items
Loan services	14,024 items	Number of materials available via the internet	
Libraries participating in the Collaborative Reference Database	907 libraries		1,250,000 items
		Available only at the NDL	220,000 items
		Number of captures (WARP)	238,065 cases

Buildings and storages (Approximate)					
	Total site area	Total floor space	Total area of reading rooms	Total storage space	Storage capacity
Tokyo Main Library	30,000 m ²	148,000 m ²	19,000 m ²	78,000 m ²	12,000,000 volumes
Kansai-kan of the NDL	83,000 m ²	84,000 m ²	4,300 m ²	39,000 m ²	11,000,000 volumes
International Library of Children's Literature	7,700 m ²	13,000 m ²	2,100 m ²	3,100 m ²	1,050,000 volumes

Staff members (excluding staff of branch libraries in the executive and judicial branches of the government)	
Number of regular staff members as of April 2023	894 members

Budget (Approximate)	
Initial budget for FY 2023	19.87 billion yen
Budget for materials	2.27 billion yen

Tokyo Main Library

1-10-1 Nagata-cho, Chiyoda-ku, Tokyo 100-8924, Japan

Phone: +81-3-3581-2331

+81-3-3506-3300 (automated voice information service)



<https://www.ndl.go.jp/en/index.html>

Main Collections

- Books, periodicals, newspapers and electronic publications published in Japan and collected via the Legal Deposit System
- Foreign books and newspapers
- Parliamentary and legislative documents, official publications, publications of international organizations, maps, rare books and old materials, modern Japanese political history documents, materials on the Allied Occupation of Japan, audio-visual materials



Opening Hours

From 9:30 a.m. to 7:00 p.m. (5:00 p.m. on Saturdays)*

Closed

Sundays, national holidays, the year-end and New Year holidays, and the third Wednesday of every month (for refiling)

Patrons

Must be 18 years of age or older to enter the library. Please contact us beforehand if you are 17 years of age or younger and wish to enter the library

Kansai-kan of the National Diet Library

8-1-3 Seikadai, Seika-cho, Soraku-gun, Kyoto 619-0287, Japan

Phone: +81-774-98-1200 (automated voice information service)



<https://www.ndl.go.jp/en/kansai/index.html>

Main Collections

- Foreign periodicals, science and technology materials, Japanese doctoral dissertations, scientific research reports under grants from the Ministry of Education, Culture, Sports, Science and Technology, talking books of academic literature for persons with print disabilities
- Asian-language and Asia-related materials



Opening Hours

From 9:30 a.m. to 6:00 p.m.*

Closed

Sundays, national holidays, the year-end and New Year holidays, and the third Wednesday of every month (for refiling)

Patrons

Must be 18 years of age or older to enter the library. Please contact us beforehand if you are 17 years of age or younger and wish to enter the library

International Library of Children's Literature

12-49 Ueno Park, Taito-ku, Tokyo 110-0007, Japan

Phone: +81-3-3827-2053

+81-3-3827-2069 (automated voice information service)



<https://www.kodomo.go.jp/english/index.html>

Main Collections

- Children's literature and periodicals published in Japan and overseas
- Materials related to children's literature

Opening Hours

From 9:30 a.m. to 5:00 p.m.*

Closed

Mondays, national holidays (except Children's Day on May 5), the year-end and New Year holidays, and the third Wednesday of every month (for refiling)

Patrons

Anybody can use the library.

